

# NEWSLETTER



## TOPICS:

>01

### LATEST NEWS

Current topics as well as past and future events.

>02

### NEW ARRIVALS IN THE WORKSHOP

Brief presentation of the components that arrived in the garage during the last month.

## UP-TO-DATE WITH RACETECH

Dear sponsors, friends and supporters,

in May, our team was involved in a number of campus events. Through the events, our fellow students were able to get to know our association and our work better. We were also able to inspire many students with our team and inform them about possible leisure activities at the university.

In the current newsletter you can read about some developments in the electronics of our racing car.

In addition, we will introduce you to some new arrivals in our workshop.

We hope you enjoy reading  
Your Racetech Racing Team

# > 01 LATEST NEWS

## CAMPUS DAY

On May 14th, prospective students and interested pupils were given the opportunity to gain an insight into everyday university life at Campus Day. At our booth, students, freshmen and parents were invited to examine the RT13, ask questions about studying and learn how they can enrich it starting in October. We look forward to welcoming some familiar faces to the university next semester.

Author: Svenja Linke



RT13 at Campus Day

## "BUNTER CAMPUS"

On May 18th, one of the first major events after the lifting of the pandemic-related restrictions took place on the forecourt of the university cafeteria with the "Bunter Campus". At the university festival, the various student associations and initiatives presented themselves to the university members and visitors. Of course, we were also present with a booth. At our RT13 we explained to interested students and citizens the Formula Student and what is behind a formula racing car. We were happy about the great interest and would like to thank the student council and the university for the organization of this great day!

Author: Svenja Linke



RT13 at colorful campus



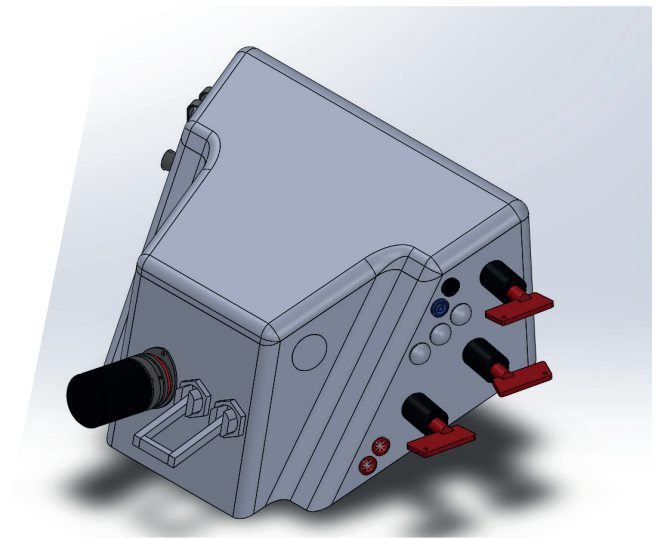


# > 01 LATEST NEWS

## HV-BOX

The HV box is part of the high-voltage system of the RT14evo. Several measuring systems are integrated in it, such as the data logger. Above all, this should be suitably fastened by the housing of the HV box and protected from external influences such as rain. The shape of the HV box was adapted for the RT14evo so that the data logger and the master switches, pneumatic valves and other components such as the TSAL control or the BSPD board fit into the housing of the HV box. The HV box is located behind the driver between the main hoop above the battery. Furthermore, it can be opened via its lid.

*Author: Sofie Heinrich*



*Model of the HV box*

## > 02

# NEW ARRIVALS IN THE WORKSHOP

*A huge thanks to all our sponsors who make these components possible for us!*

## RIMS

Since we plan to manufacture new carbon rims, we also need new rim cores. These are made of Rohacell IG-F 100, a closed-cell rigid foam. With this we can realize a sandwich construction in the rim, which ensures high rigidity with low weight.

For the manufacturing we thank Modellbau Stabnow.

*Author: Max Reichert*



*Wheel rim cores*



THANK YOU FOR YOUR SUPPORT!

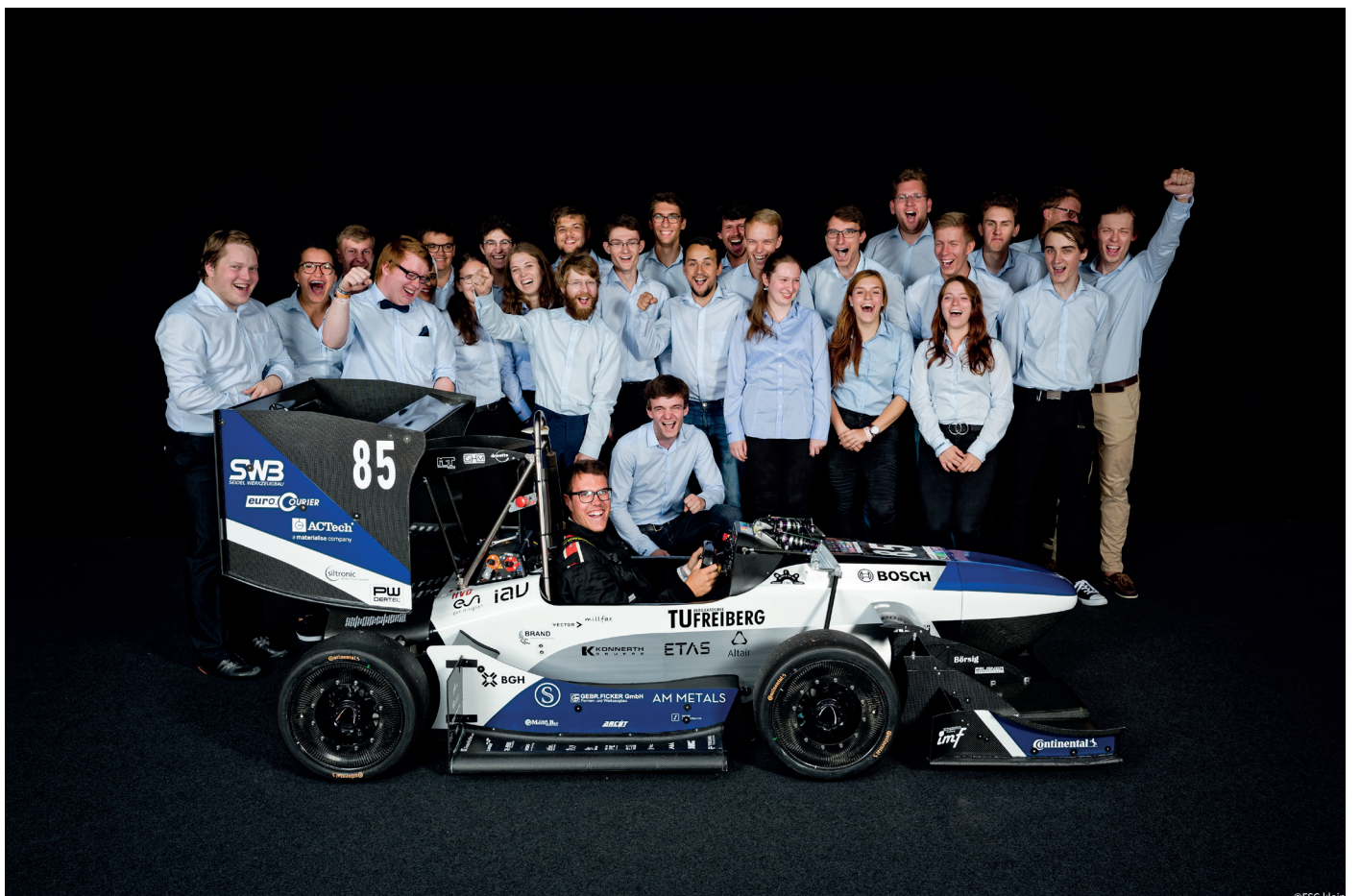
# OUR SPONSORS



AM METALS



THANK YOU FOR YOUR SUPPORT!



©FSG Klein

# RACETECH RACING TEAM



**1. MEMBER OF BOARD**  
**PHILIPP GEISLER**

**2. MEMBER OF BOARD**  
**JUEL KASSOU**



**TREASURER**  
**SVENJA LINKE**

## >>> CONTACT:

### ADRESS

TU Bergakademie Freiberg e.V.  
Bernhard-von-Cotta-Straße 4  
09599 Freiberg  
GERMANY

### CONTACT DETAILS

[info@racetech.tu-freiberg.de](mailto:info@racetech.tu-freiberg.de)  
[www.racetech-racingteam.de](http://www.racetech-racingteam.de)

### OFFICE PHONE

Tel.: +49 (0)3731 39 3962